

# USB-Link User's Manual

Congratulations on your purchase of the USB-Link Adapter. This unique Adapter allows you to easily connect two computers with USB port and instantly transfer files at great speed and ease.

## Package Checklist

The USB-Link product package includes the following items:

- USB-Link Adapter
- Driver and Software Installation CD-ROM
- This user's manual

## Overview

The USB-Link Adapter is your fast solution to peer-to-peer file transfer between two computers via the USB port. The USB-Link Adapter provides true plug-n-play capability while transferring files at much greater speed than traditional file transfer products via serial or parallel port, more than 6M bits/sec can be achieved. In most applications, the user will get greater than 4M bits/sec of smooth file transfer rate. The USB-Link application program, a Windows Program Manager-like user interface, provides a very easy to use environment that makes file transfer as easy as drag-and-drop. You simply plug in the USB-Link Adapter and do a one-time installation of the program.

## Features


The USB-Link Adapter provides the following features:

- Single chip (ASIC) USB host to host communication
- High-speed data transfer rate from 6Mbps
- Single cable solution for data communication
- Windows 98 and Windows 2000 Support
- Easy drag-n-drop file transfer
- Includes print function for remote files
- Includes power management and remote wake-up functions
- Compliant with USB specification 1.1

---

## System Requirements

Before you use the USB-Link Adapter, make sure your computer is an IBM PC-compatible with the following minimum system requirements:

- Intel-compatible 486DX-66 MHz CPU or higher
- One standard USB port (4-pin) and has the symbol 
- Either the following operating systems:
  - Windows 98/ SE, ME
  - Windows 2000

## Driver & USB-Link Program Installation

Follow the steps below on installing the USB-Link Adapter and program for the first time:

1. Power on both computers where you will connect the USB-Link Adapter, and make sure that the USB port is enabled and working properly.
2. Plug in the USB cable into the USB port and Windows will detect an unknown device and run the **Add New Hardware Wizard** to assist you in setting up the new device.
3. Insert the USB-Link CD-ROM into the CD-ROM drive and click **Next** to continue.
4. Select **Search for the best driver for your device** and click **Next**.
5. Select **Specify a location** and click **Next**. In the "Copy manufacturer's file from:", type "D:\USB-Link" where "D" is the location of your CD-ROM.
6. Windows will detect the driver (**usbbc.inf**) and shows the **USB Bridge Cable**. Click **NEXT** to continue installation.
7. Then the USB-Link Adapter Setup program will start to begin program installation.
8. Follow the instructions on every dialog box to finish the installation.
9. After installation is complete, a shortcut of the PC-Linq program will be placed on your Windows desktop.



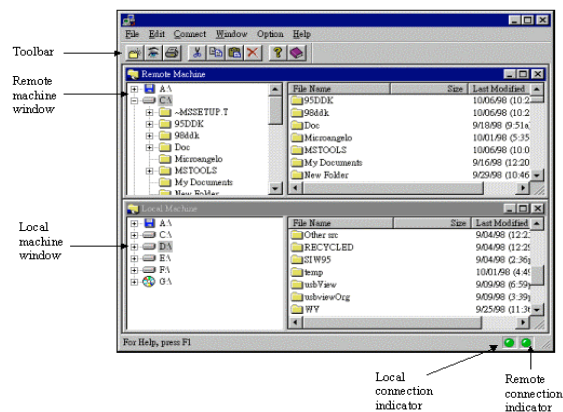
## PC-Linq

Repeat the same procedure on the other computer.

### Running the PC-Linq Program

Follow the steps below on how to run the PC-Linq program:

1. Plug in both ends of the USB-Link Adapter cables to the two computers.
2. Double-click on the PC-Linq shortcut icon on your desktop screen. Do the same for the other computer.
3. The PC-Linq File Manager will appear on your screen and will detect both the local and remote machine. This is much similar with Windows Explorer file



manager where you can cut, copy, paste, or drag files and folders.

4. You can also print text or document files from the remote machine to your local printer by clicking on the file and run File-Print command.
5. There are two LED-like indicators found on the bottom-right corner of the PC-Linq File Manager. These indicators show the connection status of the remote and local machine. The left LED is for the local machine, while the right LED is for the remote machine. A green LED indicates that the connection is good while a red LED indicates that connection is not found. Both LEDs need to be

---

in green colour for a proper link and operation. If one LED is red, either the USB cable is not properly connected, or the software is not properly installed, or the PC is in suspend mode.

6. Click on the Help Topics icon (rightmost icon) for more information on how to use the program.

### **Power management and Remote Wake-up Function**

The USB-Link Adapter supports power management of USB. When either of the two connected PC gets into suspend, the Adapter will draw less than 500  $\mu$ A of current from it. This is essential for the notebook or other mobile PC.

The PC-Linq program also includes the remote wakeup function. Whenever the remote machine goes into suspend mode, you just click on any file or folder inside the remote machine folder and the remote machine will resume to normal operation mode.

However, you can disable this function to avoid the annoyance of suspend-wakeup sequence during operating the PC-Linq application. Please click the menu bar's **Option**, then click **Setting**, and disable the **Allow System to Suspend** option.

### **Program Uninstallation**

You can uninstall the PC-Linq application program and driver by running Add/Remove Programs in Settings/Control Panel and follow the on-screen instructions to complete the process.

### **Disclaimer**

Information in this document is subject to change without notice. The manufacturer does not make any representations or warranties (implied or otherwise) regarding the accuracy and completeness of this document and shall in no event be liable for any loss of profit or any other commercial damage, including but not limited to special, incidental, consequential, or other damages.

No part of this document may be reproduced or transmitted in any form by any means, electronic or mechanical, including photocopying, recording or information recording and retrieval systems without the express written permission of the manufacturer.

All brand names and product names used in this document are trademarks, or registered trademarks of their respective holders.